

Overview of the VidyoRoom Remote Control

The VidyoRoom comes with a remote control allowing quick key shortcuts to frequent VidyoRoom activities. It also provides the input mode/keyboard for typing information.

Not in Conference

- CONNECT** — Start meeting from the homepage.
- ARROWS / OK** — Use the arrow keys to navigate on-screen. The option you navigate to will be highlighted in green when activated. Press the OK key on the remote to select the option on-screen.
- VOLUME / MUTE / SELFVIEW / ZOOM** — Not applicable
- Mute** — Not applicable
- Selfview** — Cycles through Selfview modes
- Single Screen Mode** — Shows preview
- Dual Screen Mode** — Shows help screen on the first monitor and turns control to the camera while the preview is shown on the second monitor
- Zoom** — Acts as a page up/page down for scrolling through search results on-screen
- ALPHA-NUMERIC KEYPAD** — Use these keys in conjunction with the input modes on-screen to key in user names, passwords, speed dials, and search terms.
- CONTROL KEYPAD**
 - Back** — Takes you to the previous screen in the VidyoRoom interface
 - Manage** — Brings up the remote control Help screen
 - Home** — Takes users to the home screen in the VidyoRoom interface
 - Delete** — Acts as a backspace when typing in a form field
 - Settings** — Brings up the Settings screen
 - Toggle** — There is no functionality for this key
 - A** — Multifunction key
 - B** — Multifunction key
 - C** — Multifunction key
 - D** — Multifunction key

In Conference

- DISCONNECT** — Ends meeting
- ARROWS / OK** — Left/Right — Pans camera (if supported by camera) Up/Down — Tilts camera (if supported by camera)
- VOLUME / MUTE / SELFVIEW / ZOOM** — Adjusts the sound level
- Mute** — Mutes your microphone or recording source
- Selfview** — Cycles through Selfview modes
- Single Screen Mode** — Picture-in-picture, docked, full screen and off
- Dual Screen Mode** — Picture-in-picture, docked and off
- Zoom** — Zooms your camera In/Out (if supported by camera) [HD-200 and HD-220 Only]
- ALPHA-NUMERIC KEYPAD** — Sets the number of participants viewed 1-8 — Sets the number of participants viewed 0 — Sets the number of participants back to auto
- CONTROL KEYPAD**
 - Manage** — Brings up the remote control Help screen
 - Home** — Resets Camera Pan, Tilt, and Zoom to default position (if supported by camera)
 - Privacy** — Toggles Privacy mode, so that no one in the conference can see your video
 - Share** — Toggles sharing on and off when using VGA/USB device. Press the "*" button to view shared applications in full screen.
 - Toggle** — Cycles through shared sources, including none
 - A** — Swaps displays when using Dual Screen mode
 - B** — Enables DTMF dialing mode [P2P calls only]
 - C** — Toggles Far End Camera Control mode
 - D** — Toggles between preferred/non-preferred mode



Getting Started

What's in This Box:

VidyoRoom HD-50 Accessory Kit

- VidyoRoom Remote Control
- Batteries, AAA (2)
- Cord, Power, US, 6ft [1.82m] (1)
- Cord, Power, UK, 6ft [1.82m] (1)
- Cord, Power, Europe, 6ft [1.82m] (1)
- Cable, Ethernet, 6ft [1.82m] (1)
- Cable, HDMI/DVI, 6ft [1.82m] (2)
- External IR USB Adapter and Cable
- Adapter, HDMI/DVI (2)
- Adapter, DVI/VGA (1)
- HD-50 Getting Started Guide

Optional Purchase Components:

Camera

- Logitech HD Pro Webcam C910 (Preferred)
- Logitech Quickcam Orbit AF

SpeakerPhone Options

- ClearOne Chat 150
- ClearOne Chat 50

Screen Share Adapter Kit

- Vidyo VGA2USB Capture Unit (1)



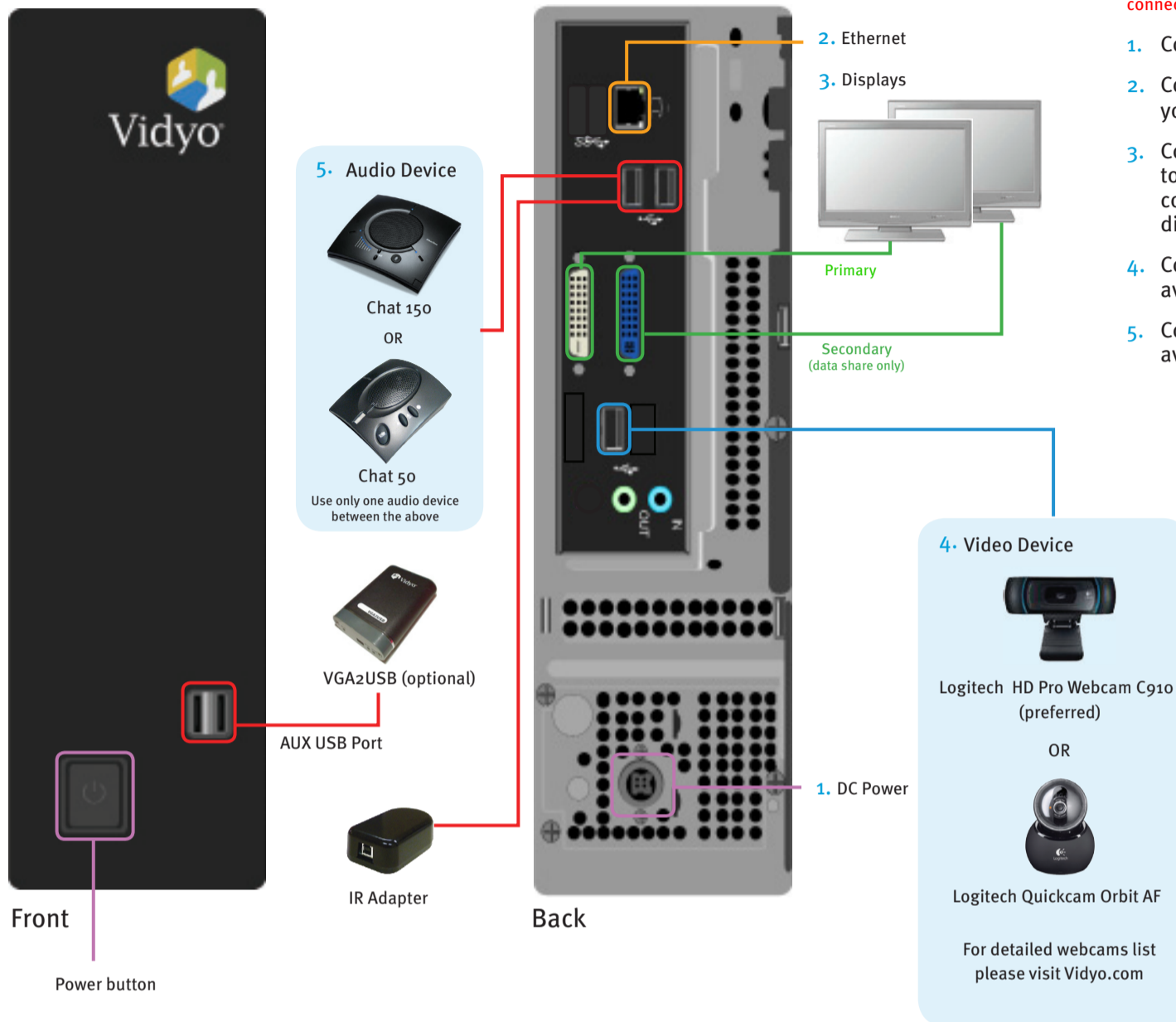
VidyoRoom™

HD-50

part number: DEV-ACC-DOC-HD50-4A-GS-REV8

RMN: VIDYO-PROD-004

The VidyoRoom Hardware



Do not power on HD-50 until the display(s) and camera are fully connected and powered on.

1. Connect the Power cable.
2. Connect the Ethernet cable to ETH-o and to your network.
3. Connect the HDMI cable or the DVI-to-DVI cable to the display. If you have a secondary display, connect it to the second DVI port. (The second display is for viewing content only.)
4. Connect the USB Webcam camera cable to an available USB port.
5. Connect the USB SpeakerPhone cable to an available USB port.

Start Up Screens*

When the system boots up, you'll see the Account screen, and you must do the following:

1.

Portal: 192.168.1.100
 User Name: vr50
 Password: *****
 Save Cancel

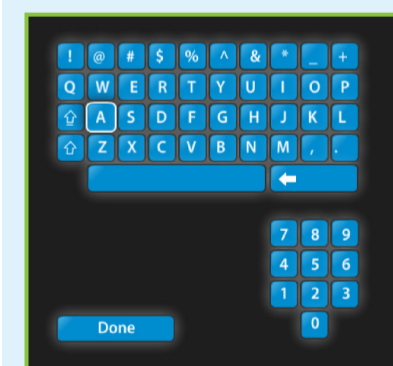
- Enter Portal – Arrow right, click **OK** and use the onscreen keyboard to enter the IP address of the VidyoPortal that the VidyoRoom is connected to.
- Enter User Name – Arrow down to the User Name field, click **OK** and use the onscreen keyboard to enter the name of the VidyoPortal.
- Enter Password – Arrow down to the Password field, click **OK** and use the onscreen keyboard to enter the password of the VidyoPortal.
- Scroll down to the **Save** button and click **OK** to save your settings.

2.

Use DHCP (selected)
 Use static IP address
 IP Address: 162.198.1.100
 Subnet Mask: 255.255.255.0
 Default Gateway: 162.198.1.50
 Primary DNS Server: 208.67.222.222
 UDP Port Range:
 UDP Start: 50000
 UDP End: 65535
 Save Cancel

- To change network settings for your VidyoRoom, click Network to access the Network screen. (The default setting on this screen is **Use DHCP**.)
- Click **Use static IP address**, and then specify the network settings using the onscreen keyboard to enter the appropriate information.
- Scroll down to the **Save** button and click **OK** to save your settings.

Using the Onscreen Keyboard



- In a field, click **OK** to view the keyboard.
- Use the up, down, left, and right arrow keys to navigate.
- Click **OK** to enter a character.
- Click **Done** to close the onscreen keyboard.

* See the separate *VidyoRoom Administrator and User Guide* for more details.