

Overview of the VidyoRoom Remote Control

The VidyoRoom comes with a remote control allowing quick key shortcuts to frequent VidyoRoom activities. It also provides the input mode/keyboard for typing information.

Not in Conference

- CONNECT** — Start meeting from the homepage.
- ARROWS / OK** — Use the arrow keys to navigate on-screen. The option you navigate to will be highlighted in green when activated. Press the OK key on the remote to select the option on-screen.
- VOLUME / MUTE / SELFVIEW / ZOOM** — Not applicable
- Mute** — Not applicable
- Selfview** — Cycles through Selfview modes
- Single Screen Mode** — Shows preview monitor and turns control to the camera while preview is shown on the second monitor
- Zoom** — Acts as a page up/page down for scrolling through search results on-screen
- ALPHA-NUMERIC KEYPAD** — Use these keys in conjunction with the input modes on-screen to key in user names, passwords, speed dials, and search terms.
- CONTROL KEYPAD**
 - Back** — Takes you to the previous screen in the VidyoRoom interface
 - Manage** — Brings up the remote control Help screen
 - Home** — Takes users to the home screen in the VidyoRoom interface
 - Delete** — Acts as a backspace when typing in a form field
 - Settings** — Brings up the Settings screen
 - Toggle** — There is no functionality for this key
 - A** — Multifunction key
 - B** — Multifunction key
 - C** — Multifunction key
 - D** — Multifunction key

In Conference

- DISCONNECT** — Ends meeting
- ARROWS / OK** — Left/Right — Pans camera (if supported by camera) Up/Down — Tilts camera (if supported by camera)
- VOLUME / MUTE / SELFVIEW / ZOOM** — Adjusts the sound level
- Mute** — Mutes your microphone or recording source
- Selfview** — Cycles through Selfview modes
- Single Screen Mode** — Picture-in-picture, docked, full screen and off
- Dual Screen Mode** — Picture-in-picture, docked and off
- Zoom** — Zooms your camera In/Out (if supported by camera)
- ALPHA-NUMERIC KEYPAD** — Sets the number of participants viewed
- 1-8** — Sets the number of participants viewed
- 0** — Sets the number of participants back to auto
- CONTROL KEYPAD**
 - Manage** — Brings up the remote control Help screen
 - Home** — Resets Camera Pan, Tilt, and Zoom to default position (if supported by camera)
 - Privacy** — Toggles Privacy mode, so that no one in the conference can see your video
 - Share** — Toggles sharing on and off when using VGA/USB device. Press the "*" button to view shared applications in full screen.
 - Toggle** — Cycles through shared sources, including none
 - A** — Swaps displays when using Dual Screen mode
 - B** — Enables DTMF dialing mode [P2P calls only]
 - C** — Toggles Far End Camera Control mode
 - D** — Toggles between preferred/non-preferred mode



Getting Started

What's in This Box:

VidyoRoom HD-100 Accessory Kit

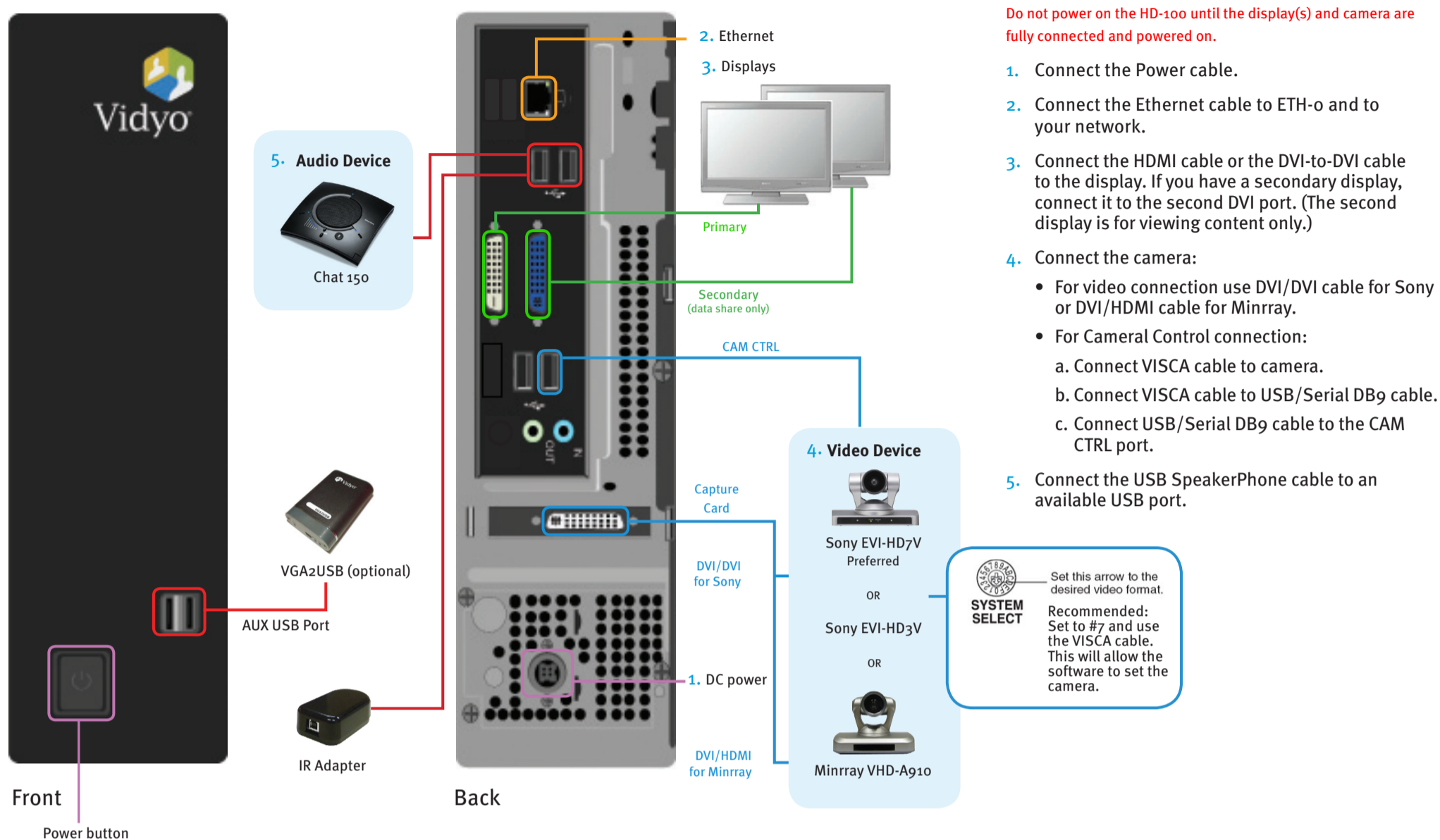
- VidyoRoom Remote Control
- Batteries, AAA (2)
- Cord, Power, US, 6ft [1.82m] (1)
- Cord, Power, UK, 6ft [1.82m] (1)
- Cord, Power, Europe, 6ft [1.82m] (1)
- Cable, Ethernet, 6ft [1.82m] (1)
- Cable, HDMI/DVI, 6ft [1.82m] (2)
- Adapter, HDMI/DVI (2)
- Adapter, DVI/VGA (1)
- External IR USB Adapter and Cable
- HD-100 Getting Started Guide
- Cable, USB/Serial DB9, 6ft [1.82m] (1)
For use with VISCA cable
- Cable, VISCA Serial, 6ft [1.82m] (1)
VISCA Cable provides PTZ Control

Optional Purchase Components:

- Camera**
 - Sony EVI-HD7V
 - Sony EVI-HD3V
 - Minrray VHD-A910 (1080p)
- SpeakerPhone Options**
 - ClearOne Chat 150
- Screen Share Adapter Kit**
 - Vidyo VGA2USB Capture Unit (1)



The VidyoRoom Hardware



Start Up Screens*

When the system boots up, you'll see the Account screen, and you must do the following:

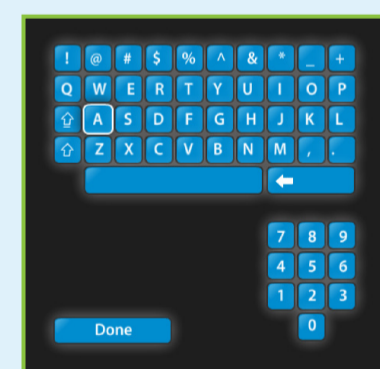
1.

- Enter Portal – Arrow right, click **OK** and use the onscreen keyboard to enter the IP address of the VidyoPortal that the VidyoRoom is connected to.
- Enter User Name – Arrow down to the User Name field, click **OK** and use the onscreen keyboard to enter the name of the VidyoPortal.
- Enter Password – Arrow down to the Password field, click **OK** and use the onscreen keyboard to enter the password of the VidyoPortal.
- Scroll down to the **Save** button and click **OK** to save your settings.

2.

- To change network settings for your VidyoRoom, click Network to access the Network screen. (The default setting on this screen is **Use DHCP**.)
- Click **Use static IP address**, and then specify the network settings using the onscreen keyboard to enter the appropriate information.
- Scroll down to the **Save** button and click **OK** to save your settings.

Using the Onscreen Keyboard



- In a field, click **OK** to view the keyboard.
- Use the up, down, left, and right arrow keys to navigate.
- Click **OK** to enter a character.
- Click **Done** to close the onscreen keyboard.

* See the separate VidyoRoom Administrator and User Guide for more details.