

VidyoRoom™ HD-230 Getting Started Guide



What's Included

Your HD-230 shipped with the HD-230 codec and the following items:

VidyoRoom HD-230		
<ul style="list-style-type: none"> ■ Power cables for the United States, Europe, and Ireland/United Kingdom – 6 ft (1.82 m) ■ HDMI to DVI Cable – 6 ft (1.828 m), Qty. 2 	<ul style="list-style-type: none"> ■ DisplayPort to DVI-D adapter ■ Dual DVI-D to DMS-59 adapter ■ VISCA to serial cable, EVI control – 6 ft (1.828 m) 	<ul style="list-style-type: none"> ■ Ethernet cable, Cat5E – 7 ft (2.13 m) ■ Infrared remote control with 2 AAA batteries ■ External infrared receiver with USB cable – 6 ft (1.828 m)

Your HD-230 includes a DVI input for video shares. The DVI to USB3 Adapter, which can be purchased separately, is required for audio and video shares.

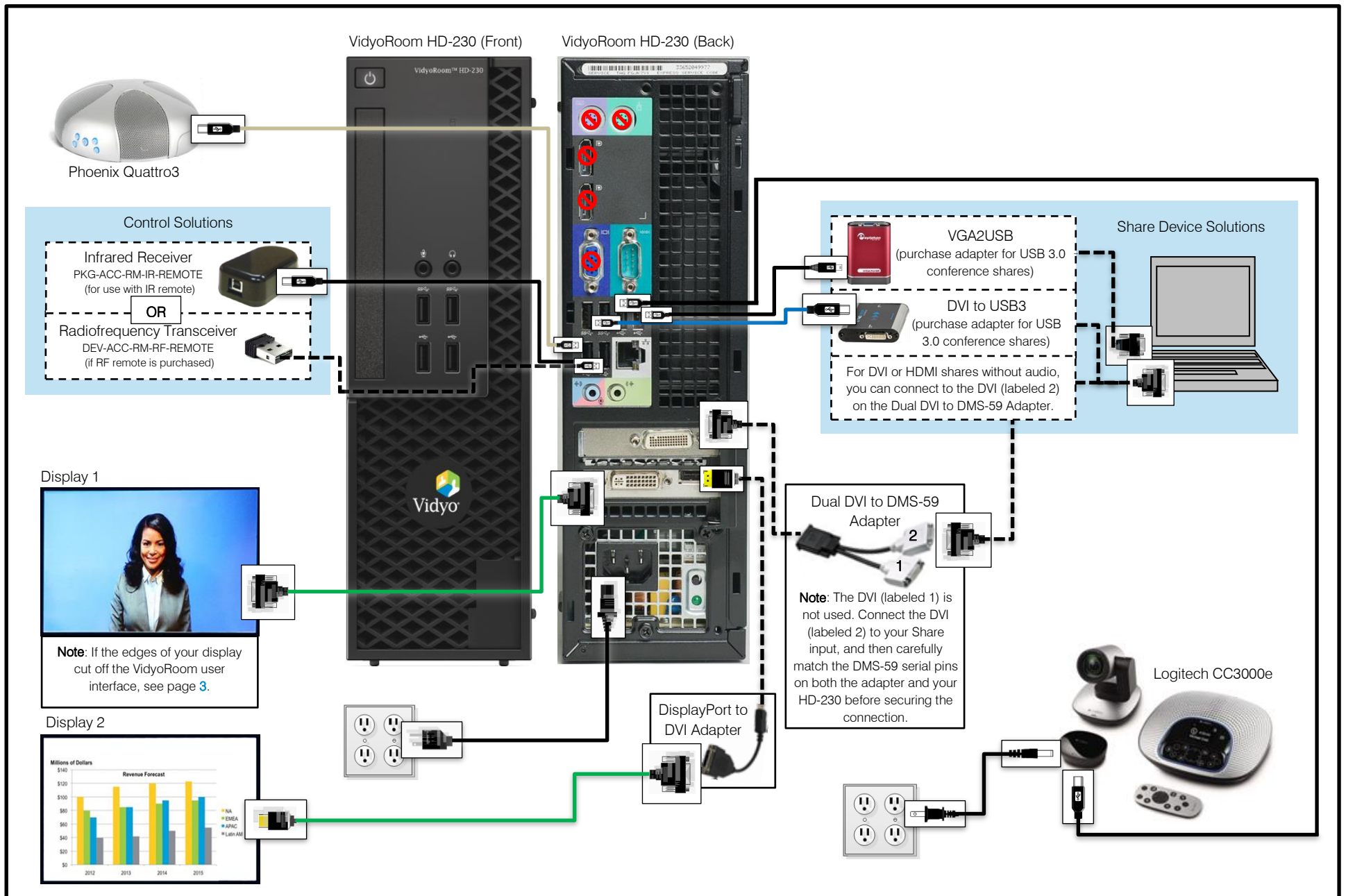
DVI to USB3 Adapter	Part Number: DEV-ACC-RM-DXT-D2U3 For simply adding high frame rate shares and projection capabilities
<ul style="list-style-type: none"> ■ DVI to USB 3.0 adapter – includes 3 ft. (0.91 m) USB 3.0 cable 	

Separate diagrams in this guide show connections for both the Logitech CC3000e and Sony SRG 120DU cameras with the Phoenix Quattro3 speakerphone. Additional peripherals sold separately.

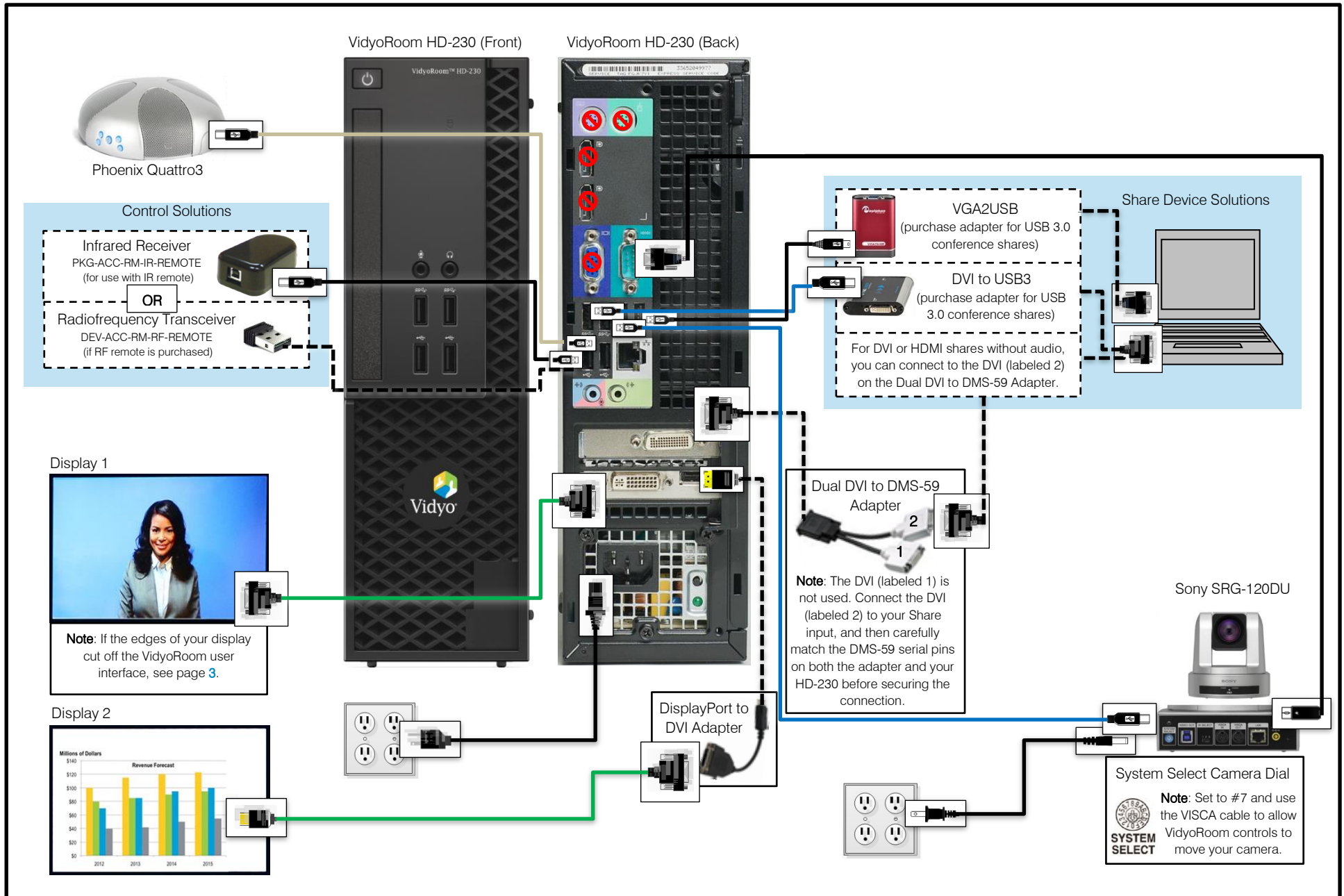
To view a list of peripherals compatible with VidyoRoom, go to <http://www.vidyo.com/support/peripherals>.

Logitech CC3000e	Sony SRG-120DU	Phoenix Quattro3
<ul style="list-style-type: none"> ■ Camera, Speakerphone, Remote Control, and Powered Hub ■ Wall or table camera mount ■ Speakerphone to hub cable – 16 in (40.6 cm), USB cable, and Remote control ■ Adhesive (for mounting hub) and Power adapter 	<ul style="list-style-type: none"> ■ Camera ■ Power adapter and power cables for United States, Ireland and United Kingdom, and Europe – 6 ft (1.82 m) ■ Remote control ■ VISCA to serial 6ft cable ■ USB 3.0 A to B 6ft cable 	<ul style="list-style-type: none"> ■ Quattro3 unit ■ USB A to USB Mini B cable ■ Ethernet Cable

Installing Your HD-230 with a USB-Connected Camera (Logitech CC3000e Pictured)

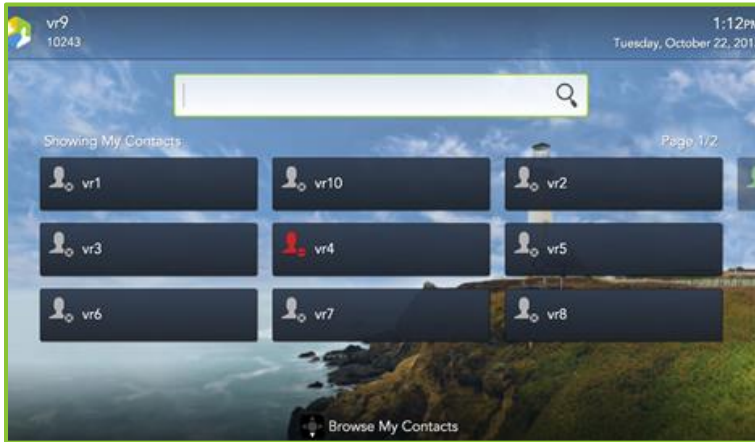


Installing Your HD-230 with a USB-Connected Camera (Sony SRG-120DU Pictured)



Configuring Supported Television Picture Settings

If the edges of your display cut off your VidyoRoom UI, your screen may resemble the following screenshot:



The following table describes how to configure supported television picture settings in order to properly align the user interface:

LG	Samsung	Sharp	Sony	Vizio
<ol style="list-style-type: none"> 1. Press Menu on your TV remote. 2. Select Picture > Picture Options. 3. Select Just Scan. 	<ol style="list-style-type: none"> 1. Press P. Size on your TV remote. 2. Select Screen Fit. 	<ol style="list-style-type: none"> 1. Press Menu on your TV remote. 2. Select Picture > Advanced Settings. 3. Turn OverScan Off. 	<ol style="list-style-type: none"> 1. Press Wide on your TV remote. 2. Select Wide Mode > Full. 	<ol style="list-style-type: none"> 1. Press Display on your TV remote. 2. Select Normal.

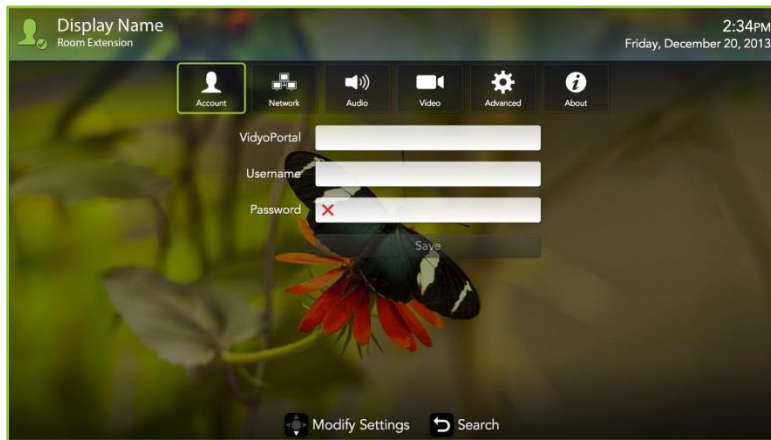
For more information, refer to the documentation provided with your television.

Configuring the Account and Network Settings

To configure the VidyoPortal™ account settings:

1. When the VidyoRoom powers up, press the **Settings** button on the remote control.

The *Account* screen displays the default IP address of your VidyoPortal as well as the default user name and password that came with your VidyoRoom. You must change these as described here.



2. Navigate to the **Username** textbox and use the Lucky Clover Keypad to enter the name of the VidyoPortal.
3. Navigate to the **Password** textbox and use the Lucky Clover Keypad to enter the password for the VidyoPortal.
4. Navigate to the **VidyoPortal** textbox and use the Lucky Clover Keypad to enter the IP address or URL of the VidyoPortal. (You don't have to enter "http://".)
5. Navigate to the **Save** button and press **OK** to save your settings.

To configure the network settings:

1. Use the arrow buttons to navigate to the **Network** tab and press **OK**. The *Network* screen displays:



Your VidyoRoom is set to **Use DHCP** by default. This enables it to automatically obtain its IP address.

2. If you want to change your VidyoRoom network settings, press the down arrow key to the **DHCP** field, then the right arrow key to turn DHCP **OFF**.
3. Navigate to each textbox, enter the appropriate network setting.
4. Navigate to the **Save** button and press **OK** to save your settings.

For complete information about how to configure your VidyoRoom, refer to the *VidyoRoom and VidyoPanorama 600 Administrator Guide*. For complete information about how to use your VidyoRoom, refer to the *VidyoRoom and VidyoPanorama 600 Quick User Guide*.

- To obtain user documentation and access other helpful resources, go to <http://www.vidyo.com/services-support/technical-support/product-documentation> or register at selfservice.vidyo.com/register.
- To view a list of the various peripherals available with VidyoRoom, go to <http://www.vidyo.com/support/peripherals>.